



Social Impact Funds

Catalyzing change:
a better health
future for all

2024 YEAR-END REVIEW

INTRODUCTION

A Year of Momentum

PART 1

Impact by the Numbers

PART 2

Improving Lives, Uplifting Communities

PART 3

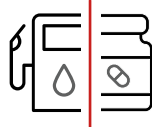
A Multiplying Force for Equitable Health

CONCLUSION

A Look Ahead



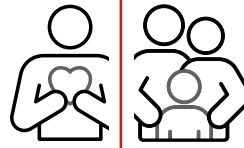
When you don't have a home,
a job, a safe environment in which to live,
access to health care and/or money to pay for basic needs,
you're forced to make choices.



Do I buy gas to get to work **OR** pay for the medicine I need?

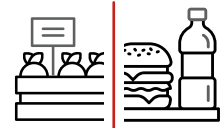


Do I take my child to the doctor **OR** pay the rent?



Do I take care of my family **OR** do I take care of myself?

Do I take two buses to get to the farmer's market **OR** feed my family with a fast-food value meal for less?



The American Heart Association **Social Impact Funds** were established to level the playing field.

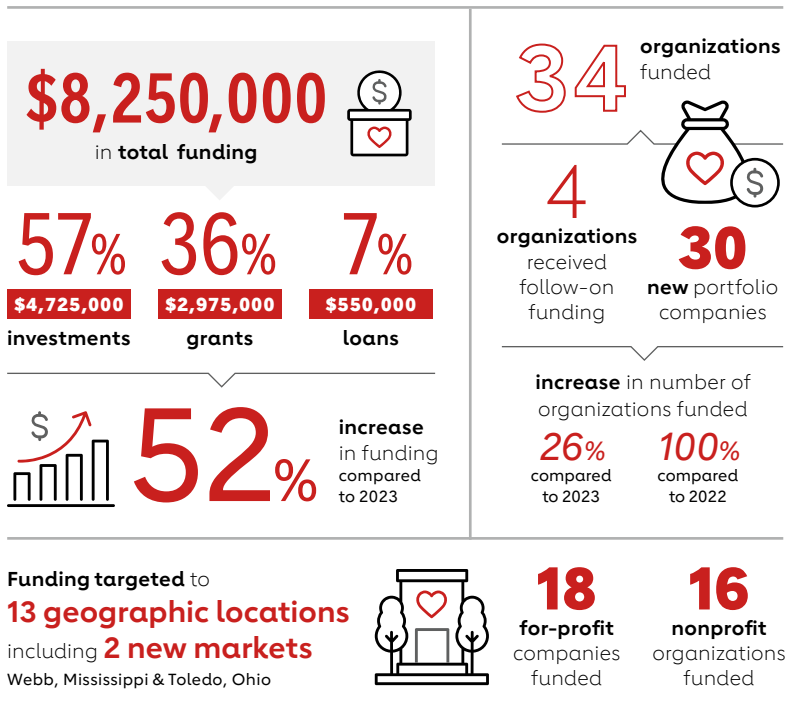
The Social Impact Funds channel capital to for-profit and nonprofit organizations that use deep community understanding and evidence-based interventions to overcome barriers to health care, food security and economic empowerment and leave a lasting impact. Our work is inspired by the legacy of Bernard J. Tyson, a visionary leader who cared passionately about the health and well-being of all.

2024 was a year of momentum. We funded **34** organizations — **26%** more than in 2023 and **100%** more than 2022 — in our commitment to help address social challenges that keep people from optimal health. We invested **\$8.25M** in these companies thanks to generous donations to the Social Impact Funds. Our 2024 funding was **52%** more than 2023 and **175%** more than 2022.

In 2025, we will continue to identify opportunities in which our funding can improve access to high quality health care, reduce food insecurity and improve economic empowerment. The Social Impact Funds' most powerful tool for achieving equitable health is catalytic funding that amplifies the Association's mission to advance health and hope for everyone, everywhere.

Impact by the Numbers

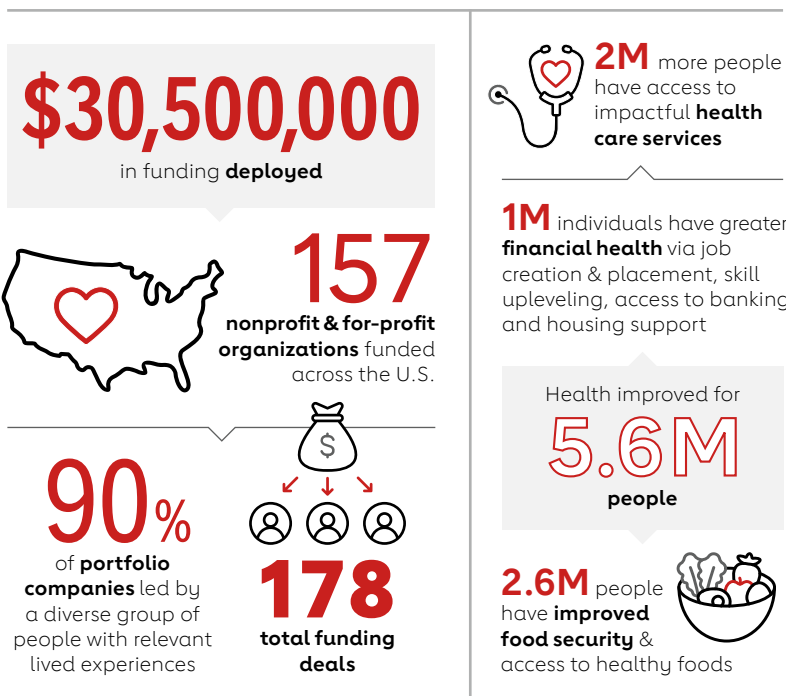
Investing in Individual & Community Health



“Investing in communities is how we can improve health and lives. The organizations we support have found innovative ways to increase health resources in their communities. They know what’s needed and are making a difference by closing gaps and opening opportunities. The Social Impact Funds help give these organizations the financial boost they need to make a meaningful and sustainable difference in people’s lives.”

REGINA BENJAMIN, M.D., MBA
SOCIAL IMPACT FUNDS
INVESTMENT COMMITTEE CHAIR,
18TH U.S. SURGEON GENERAL

Purposeful Funding, Positive Impact Since 2018



Improving Lives, Uplifting Communities

The organizations supported by the Social Impact Funds are turning ideas into impact. Below are just a few of the organizations we are proud to help leverage evidence-based science, clinical expertise and operational know-how to tackle the social drivers of health.

SPOTLIGHT ON

Health Care Access & Quality

Overcoming barriers to high-quality, affordable, accessible health care that is age, gender and culturally appropriate.



Strong Children Wellness is a health care network that integrates tech-enabled and culturally-responsive primary care, mental health care and social care services into under-resourced communities of color through partnerships with human service organizations, to improve health care access, equity and quality for psychosocially and medically complex children and caregivers. Based and operating in New York City.



Sober Sidekick connects members with real-time peer support via a groundbreaking health engagement program, boosting their recovery journey and reducing relapse rates. Based in Arkansas; platform available nationwide.



Pear Suite equips health care professionals, health systems and community health workers to identify and address the social drivers of health and improve outcomes through a care navigation platform and provider network. Based in Hawaii; operating nationwide.

ACCESS TO CAPITAL

DRIVES IMPACT

The American Heart Association Social Impact Funds help fill a critical gap in the financial ecosystem by supporting traditionally overlooked and underfunded organizations. We are proud to report that **90%** of our portfolio companies are led by a group of people with diverse lived experiences. We firmly believe these are the people who are often best suited to overcome the challenges that prevent good health in communities nationwide.

OBEN HEALTH, for example, is bringing health care closer to the community by offering screenings, education and treatment in trusted gathering places. Starting with barber-shops and salons in the Black community, they're making it easier for people to access care in familiar, welcoming spaces.

Our funding has had a multiplier effect, generating about **12x** in additional revenue and capital — **\$324M+** — for our portfolio companies.

SPOTLIGHT ON

Food Security

Increasing access to healthy, affordable food via sustainable farming, mobile markets, food hubs, food as medicine and more.

The Bento logo features the word "bento" in a lowercase, bold, sans-serif font, enclosed within a rounded rectangular border with a pink-to-purple gradient.

Bento is on a mission to improve the health and overall quality of life for the most vulnerable populations in the U.S. As a tech-enabled-service, Bento connects Medicaid members with nutritious, dietitian-curated groceries that are delivered from nearby grocery stores, coupled with Bento nutrition coaching and case management. Bento serves 30+ counties across California and is expanding into New York.



BrightSide is an innovative food solution model that turns corner stores into healthy food access points by supplying them with fresh produce, increasing access for people living in food deserts. Serves stores across Minneapolis and St. Paul and offers weekly distribution and direct-to-consumer home deliveries.



Attane Health provides nutritious groceries, coaching and educational resources to people at risk of developing or who are living with a chronic health condition to improve health outcomes, drive behavioral change and reduce total cost of care. Based in Missouri; patient-driven digital marketplace available nationally.



FUNDING MAPPED TO COMMUNITY NEED

Leveraging the full reach of the American Heart Association, the Social Impact Funds source, evaluate and map funding to need. We join with the Association's volunteer network and community stakeholders to understand local challenges and identify organizations with promising solutions.

CHIFRESH KITCHEN in Chicago, for example, is tackling food security and providing economic opportunities. This worker cooperative food service contractor, owned and managed by formerly incarcerated women, offers nutrient-dense meals to institutions serving food-insecure residents on Chicago's West and South sides.

We do more than write a check. We are hands-on, supporting every portfolio company in navigating challenges, mitigating risk and accelerating the viability and reach of their innovative ideas.

SPOTLIGHT ON

Economic Empowerment

Promoting economic resilience through job creation, skill upleveling, banking access, financial literacy, violence prevention, housing support and more.



SUMA increases economic opportunity, financial inclusion and prosperity for the Latino community through culturally relevant financial education alongside tools and resources to build wealth. Based in Los Angeles, the SUMA platform is available nationwide and inclusive to anyone who needs their services.



RiseKit is a software platform that connects untapped talent to employment opportunities through community organizations and training programs, while addressing social barriers like transportation, childcare and other factors that impact economic well-being. Based in Chicago with services available nationwide, RiseKit empowers people to achieve meaningful employment and improve their quality of life.



West Virginia Women Work helps women overcome barriers to economic self-sufficiency by preparing them to work in the skilled trades through training, placement, wraparound support services and resource navigation for low-income, unemployed and underemployed women. Serves West Virginia.



THE POWER OF COLLECTIVE IMPACT

UTAH WOMEN IN TRADES (UWIT), one of our portfolio companies, provides hands-on training, mentorship and resources to women so they can succeed in the skilled trades. Many of the participants in their pre-apprenticeship program were previously incarcerated and face additional barriers to economic self-sufficiency.

We facilitated a collaboration between UWIT and **RASA LEGAL**, another portfolio company, so that women in the UWIT program had access to Rasa's simple and affordable record expungement services under Utah's Clean Slate Law.

We then linked UWIT with **FRSH**, a portfolio company specializing in financial services for formerly incarcerated individuals that opens access to barrier-free banking. These collaborations have enhanced UWIT's ability to transform the lives of women in their program — creating a brighter future for them and their families.

A Multiplying Force for Equitable Health

Our vision is to advance equitable health while changing the future of health for everyone, everywhere. The generosity, passion and commitment of our donors is the lever we use to turn that vision into reality.

“It’s all about sustainable change, and the American Heart Association has the programs and the personnel on the ground to see the problems from all angles and make an effective difference in health equity. **Seeing how organizations supported by the Social Impact Funds are eliminating disparities and improving lives is so rewarding.**”

RICH WEBSTER

CO-PRESIDENT & BOARD MEMBER
HELEN AND WILL WEBSTER FOUNDATION

*Donations from the Helen and Will Webster Foundation have catalyzed innovative ideas in Los Angeles and beyond. For example, **Daivergent**, one of our 2024-funded organizations, empowers adults living with neurodivergence and disability to build employment, life and social skills through its reimbursable job-readiness and care delivery platform.*

“Supporting and improving the general welfare and quality of life in communities served by BNSF Railway is one of our long-held values as a company. **Through the Social Impact Funds, we’ve had the opportunity to focus resources in Houston and Beaumont, directly contributing to the well-being of people in our home state of Texas.**”

ZAK ANDERSEN

FOUNDATION PRESIDENT
BNSF RAILWAY FOUNDATION

*Among the organizations supported by BNSF Railway’s donation to the Social Impact Funds is Houston-based **ProUnitas**, which offers a digital platform and expert coaching to help Title 1 school districts implement integrated and holistic student supports that meet basic needs — from having enough food to mental health support — creating an ecosystem that ensures every student is safe, supported and graduates with purpose.*



PORTFOLIO COMPANIES

MAKING HEADLINES

Our ultimate goal is to give our portfolio companies the fuel they need to grow and scale their life-changing work. It’s exciting to see others take notice and to share a couple spotlights featured in mainstream media.

SAME CAFÉ in Toledo, Ohio, is addressing food insecurity by offering meals in exchange for volunteering time, donations or fresh produce. [Watch on CBS Mornings.](#)

The Community as Medicine program created by **OPEN SOURCE WELLNESS** is fighting the epidemic of loneliness with prescriptions to socialize. [Listen on NPR.](#)

Special Thanks

The expertise and advice of the **SOCIAL IMPACT FUNDS INVESTMENT COMMITTEE** guides our work to drive positive change.

Made up of leaders in advancing community health, especially among diverse populations, the Committee oversees all funding strategy and decisions.



Regina Benjamin, M.D., MBA
18th U.S. Surgeon General
Committee Chair



Alex Almazan
Managing Partner,
Almazan Law



Denise Bradley-Tyson
Chair,
Bernard J. Tyson Impact Fund



Neil Meltzer
President & CEO,
Life Bridge Health



Gerald Johnson
EVP, Office of Health Equity
& Chief Diversity Officer,
American Heart Association



Lisa Suennen
Managing Partner,
American Heart
Association Ventures

The momentum that marked 2024 wouldn't be possible without the expertise, dedication and passion of the **SOCIAL IMPACT FUNDS INVESTMENT TEAM.**



Omer Imtiazuddin
Managing Director



Valerie Dao
Senior Principal



Mark McCoy
Senior Principal



Sarah Young
Principal



Haroon Khan
Senior Program Coordinator



A Look Ahead

Since 2018, the American Heart Association Social Impact Funds have gone where need meets donor passion for supporting organizations and communities from coast to coast. We continually evolve to meet the most pressing health concerns.

Addressing the Loneliness Epidemic

Loneliness and social isolation among older adults are a national epidemic, and can increase risk for heart disease, stroke, Type 2 diabetes, dementia, depression, anxiety and earlier death. Older adults and caregivers are especially vulnerable. The national initiative we launched in 2024 creates the opportunity for like-minded funders and leaders to come together to expand social support and address care gaps for better health outcomes and equity.

Evolving to Meet the Moment

We're always exploring how the Social Impact Funds can play a bigger role in supporting people and communities. In collaboration and discussion with our stakeholders, we recognized how important it was to expand our focus on seniors and caregivers and that gave rise to our national initiative.

We're already thinking about what comes next as needs evolve and new challenges emerge. Together with entrepreneurs, donors and changemakers, we will continue to leverage capital to build a future of equitable health and well-being.

Changing the Future of Health, Together

We invite you to learn more about the **Social Impact Funds** and join with us in funding solutions that give more people the opportunity to have a healthy, safe, economically secure life no matter their life experiences or where they live.

IMPACT ON

LIFE EXPECTANCY

Where you live shouldn't determine how well, or how long, you live ... but it does. Only **20%** of health outcomes are linked to clinical care. **80%** of our health outcomes and life expectancy are influenced by socioeconomic, environmental and behavioral factors. The conditions in which we are born, live, learn, work, play and age — the social drivers of health — can have a negative effect for anyone, but especially for under-resourced and under-represented populations. In addition, health behaviors, such as diet, exercise and smoking directly influence health outcomes by affecting disease risk, progression and overall well-being.

At least **6 IN 10** U.S. adults, more than **184M** people, are expected to have some type of cardiovascular disease within the next 30 years. So, giving people the opportunity to thrive isn't just the right thing to do. It's **smart science**.

*The Social Impact Funds, including the Bernard J. Tyson Impact Fund, are a part of **American Heart Association Ventures**, the group that leads and coordinates the venture capital programs of the American Heart Association.*